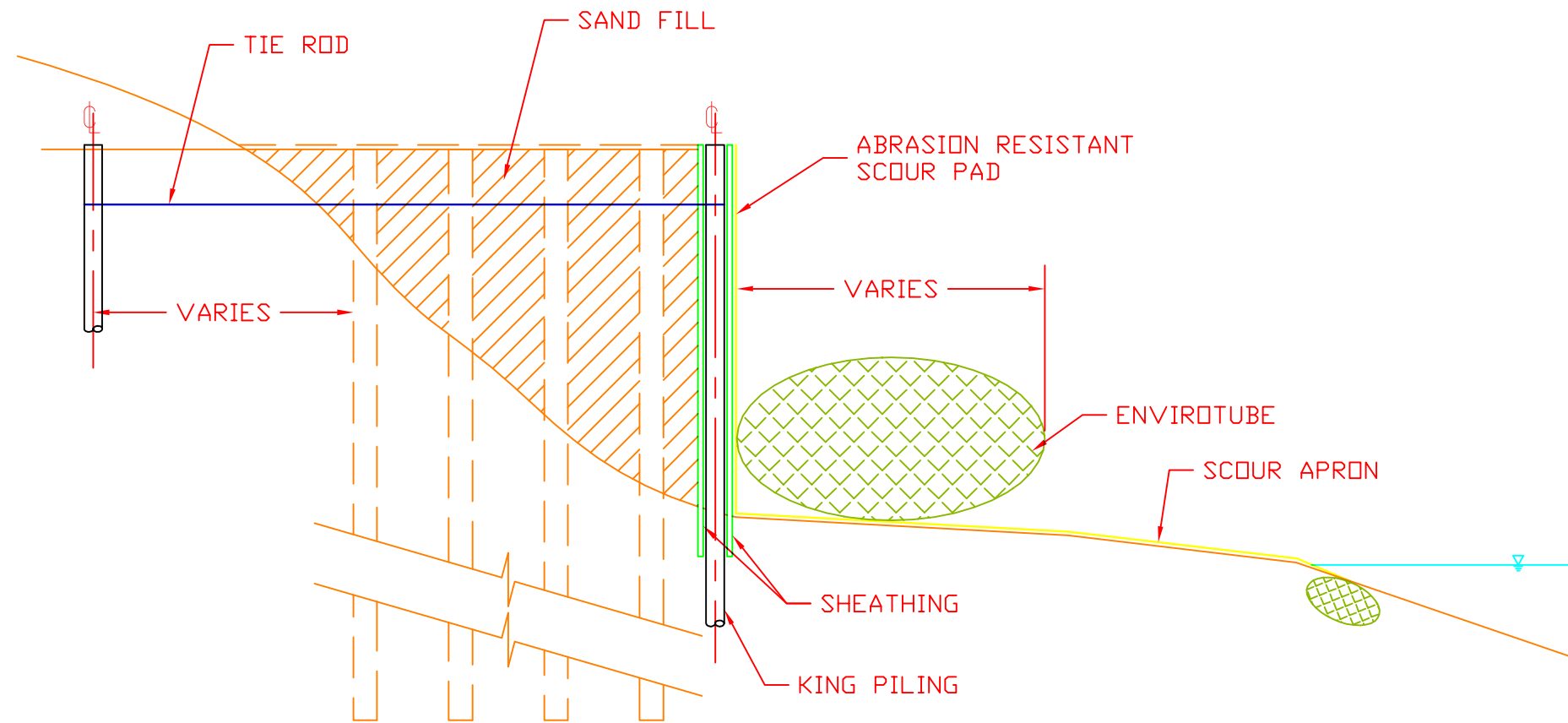


NOTE:

- 1. SCOUR APRON REPLACES 12" BEDDING STONE LAYER.**
- 2. ENVIROTUBE REPLACES 2 TO 9 TON ARMOURING STONE.**



OWNER:

CONTRACTOR:

INDUSTRIAL FABRICS, INC.
 www.ind-fab.com
 5100 West Lake
 Baton Rouge, LA 70819
 (225) 273-9600 - Phone
 (225) 273-0440 - Fax

SUPPLIER:

CASE CUSTOM CAD
 ANDY CASE
 322 Fountainbleau Drive
 Baton Rouge, LA 70819
 (225) 954-4212 hitrac@yahoo.com

DRAWN BY:

Title: WOODEN BULKHEAD WITH TUBE REPLACEMENT		No.		Date	Revision	By
Scale:		File Name:		Project No:	Drawing No:	12

DISCLAIMER
 THE INFORMATION CONTAINED HEREIN HAS BEEN COMPILED BY INDUSTRIAL FABRICS AND TO THE BEST OF OUR KNOWLEDGE, ACCURATELY REPRESENTS THE INDUSTRIAL FABRICS PRODUCT USE IN THE APPLICATIONS WHICH ARE ILLUSTRATED. FINAL DETERMINATION OF THE SUITABILITY FOR THE USE CONTEMPLATED AND ITS MANNER OF USE ARE THE SOLE RESPONSIBILITY OF THE USER. STRUCTURAL DESIGN AND ANALYSIS SHALL BE PERFORMED BY A QUALIFIED ENGINEER.

THIS DRAWING IS BEING FURNISHED FOR THIS SPECIFIC PROJECT ONLY. ANY PARTY ACCEPTING THIS DOCUMENT DOES SO IN CONFIDENCE AND AGREES THAT IT SHALL NOT BE DUPLICATED IN WHOLE OR IN PART, NOR DISCLOSED TO OTHERS WITHOUT THE CONSENT OF INDUSTRIAL FABRICS.