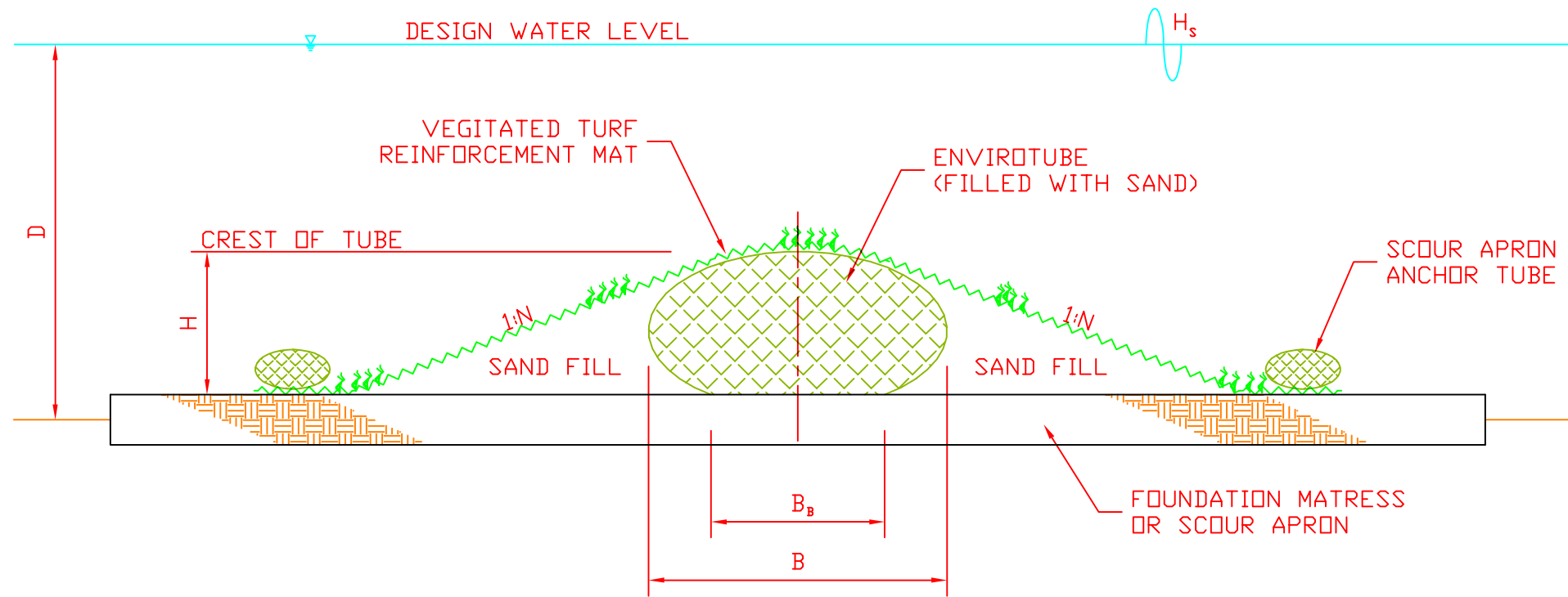


D = WATER DEPTH
 H = TUBE HEIGHT
 B_B = BASE WIDTH
 B = TOTAL WIDTH
 H_s = SIGNIFICANT WAVE HEIGHT



NOTE:

IN CASES WHERE:

1. VEGETATION CAN NOT BE ESTABLISHED
2. HYDRAULIC CONDITIONS ARE BEYOND THE PERFORMANCE OF REINFORCEMENT MAT, FLEXIBLE MATRESS CONCRETE OR RIP-RAP MAY BE USED FOR ARMORING. CONSULT ENVIROTUBE IN THESE INSTANCES.

Title: TURF REINFORCEMENT MAT ARMORING		No.	Date	Revision	By
Scale:	File Name:	Project No:	Drawing No: 14		

DISCLAIMER
 THE INFORMATION CONTAINED HEREIN HAS BEEN COMPILED BY INDUSTRIAL FABRICS AND TO THE BEST OF OUR KNOWLEDGE, ACCURATELY REPRESENTS THE INDUSTRIAL FABRICS PRODUCT USE IN THE APPLICATIONS WHICH ARE ILLUSTRATED. FINAL DETERMINATION OF THE SUITABILITY FOR THE USE CONTEMPLATED AND ITS MANNER OF USE ARE THE SOLE RESPONSIBILITY OF THE USER. STRUCTURAL DESIGN AND ANALYSIS SHALL BE PERFORMED BY A QUALIFIED ENGINEER.

THIS DRAWING IS BEING FURNISHED FOR THIS SPECIFIC PROJECT ONLY. ANY PARTY ACCEPTING THIS DOCUMENT DOES SO IN CONFIDENCE AND AGREES THAT IT SHALL NOT BE DUPLICATED IN WHOLE OR IN PART, NOR DISCLOSED TO OTHERS WITHOUT THE CONSENT OF INDUSTRIAL FABRICS.

OWNER:

CONTRACTOR:

SUPPLIER:

DRAWN BY:


INDUSTRIAL FABRICS, INC.
www.ind-fab.com
 5100 N. Canal Lane, #19
 Baton Rouge, LA 70819
 (225) 273-9600 - Phone
 (225) 273-0440 - Fax


ASE CUSTOM CAD
ANDY CASE
 322 Fountainebleau Drive
 Baton Rouge, LA 70819
 (225) 954-4212 hitrac@yahoo.com