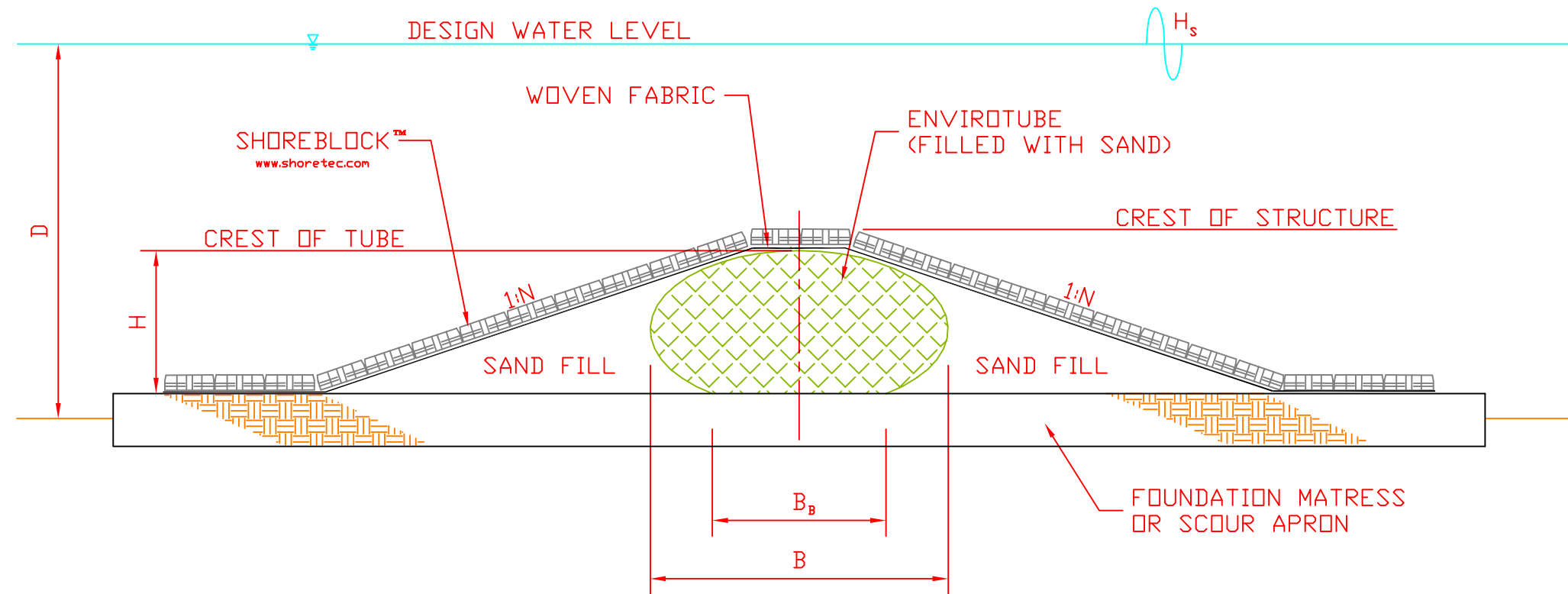


D = WATER DEPTH
H = TUBE HEIGHT
 B_b = BASE WIDTH
B = TOTAL WIDTH
 H_s = SIGNIFICANT WAVE HEIGHT



OWNER:

CONTRACTOR:

INDUSTRIAL FABRICS, INC.
www.ind-fab.com
5100 N. Canal Lane
Baton Rouge, LA 70819
(225) 273-9600 - Phone
(225) 273-0440 - Fax

SUPPLIER:

ASE CUSTOM CAD
ANDY CASE
322 Fountainbleau Drive
Baton Rouge, LA 70819
(225) 954-4212 hitrac@yahoo.com

DRAWN BY:

Title: ACB MAT ARMORING		No.	Date	Revision	By
Scale:		File Name:		Project No:	Drawing No: 15

DISCLAIMER
THE INFORMATION CONTAINED HEREIN HAS BEEN COMPILED BY INDUSTRIAL FABRICS AND TO THE BEST OF OUR KNOWLEDGE, ACCURATELY REPRESENTS THE INDUSTRIAL FABRICS PRODUCT USE IN THE APPLICATIONS WHICH ARE ILLUSTRATED. FINAL DETERMINATION OF THE SUITABILITY FOR THE USE CONTEMPLATED AND ITS MANNER OF USE ARE THE SOLE RESPONSIBILITY OF THE USER. STRUCTURAL DESIGN AND ANALYSIS SHALL BE PERFORMED BY A QUALIFIED ENGINEER.

THIS DRAWING IS BEING FURNISHED FOR THIS SPECIFIC PROJECT ONLY. ANY PARTY ACCEPTING THIS DOCUMENT DOES SO IN CONFIDENCE AND AGREES THAT IT SHALL NOT BE DUPLICATED IN WHOLE OR IN PART, NOR DISCLOSED TO OTHERS WITHOUT THE CONSENT OF INDUSTRIAL FABRICS.